

FEMORAL TABLE

The latest innovation by Adept Medical, the Femoral Table joins Adept's already popular STARSsystem.

Designed in conjunction with a Neuroradiologist, the table is an effective solution for all femoral access procedures. It offers clinical benefits to the current practice of laying procedural equipment over the draped patient's legs.

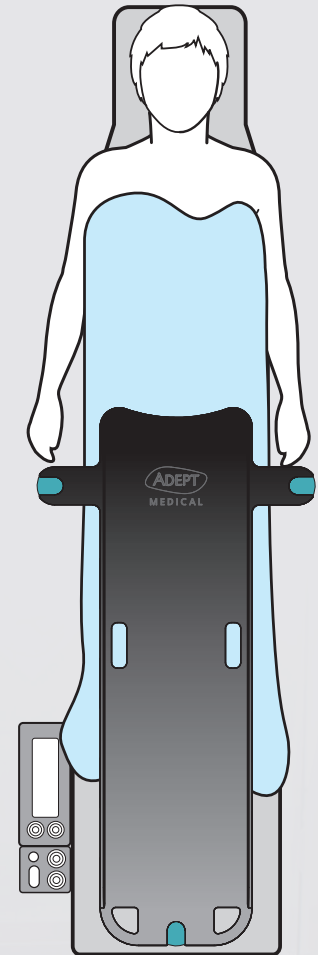
The height adjustable radiolucent work surface facilitates stable catheter/guide wire manipulation and provides a surface for syringes, towels and other equipment.

Placed over the patient's legs once they are in a supine position on the angiography table, the height of the work surfaces' feathered leading edge can then be tuned to align with the arterial access site.

Made from carbon fibre, the table is radiolucent, light weight and strong.



A TABLE DESIGNED
SPECIALLY FOR
FEMORAL
PROCEDURES



KEY FEATURES

Clinician design

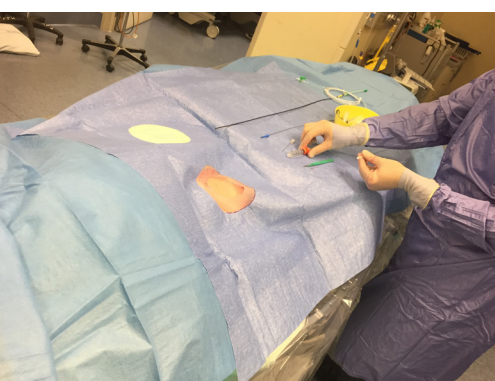
Fits most tables

Quick set up

Easy positioning

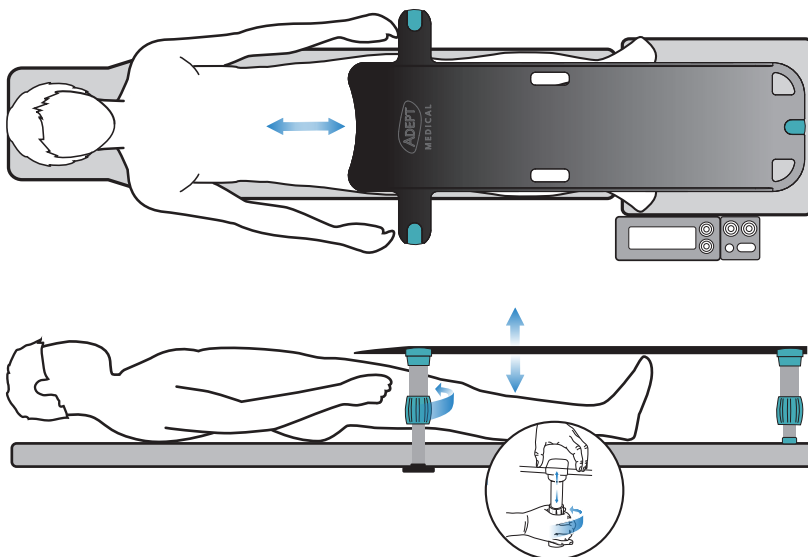
Radiolucent

Carbon fibre



FAST POSITIONING

Light weight and height adjustable, the Femoral table facilitates stable catheter/guide wire manipulation.



APPLICATIONS

Cardiology

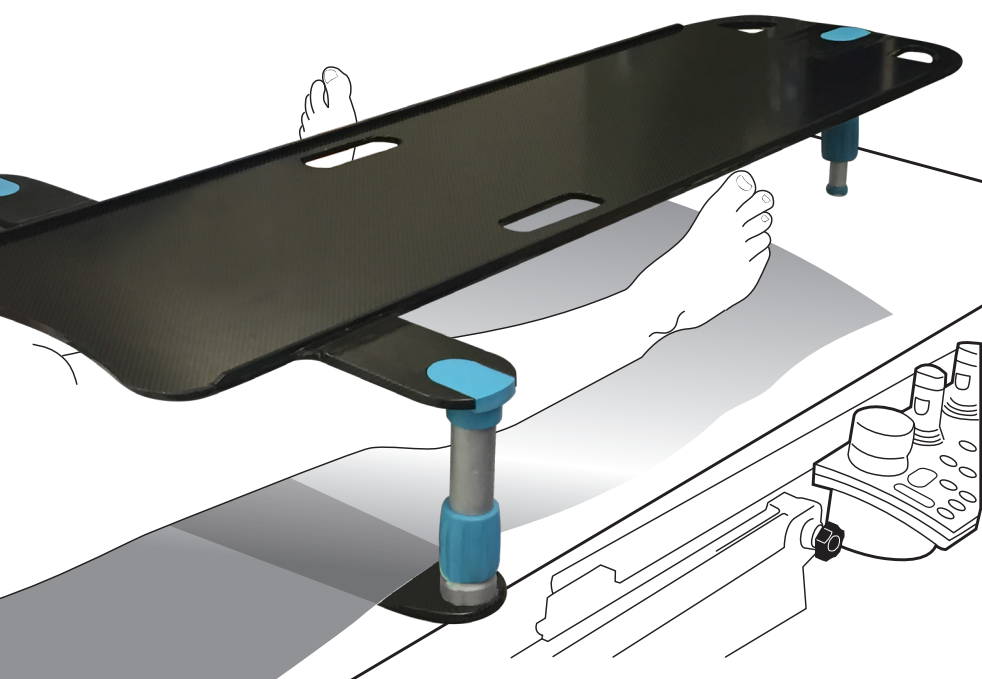
- Coronary angiography/ percutaneous coronary intervention.
- Diagnostic and interventional electrophysiology procedures.
- Structural cardiac and other similar procedures eg. Transcatheter aortic valve implantation (TAVI), aortic stenting.

Radiology

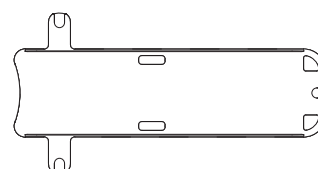
- Neurovascular
- Peripheral

Other

- Abdominal & Pelvic Surgery
- Thoracic Surgery



SPECIFICATIONS



Dimensions (cm):
 L 143 x W 74 x H 18-26
 Max mattress width 66cm
 Weight: 4.2kg
 Table materials:
 Radiolucent Carbon Fibre.
 Leg materials:
 Aluminium, Steel, Plastic

For more information please visit
www.adeptmedical.com/femoral

FEMORAL TABLE

The latest innovation by Adept Medical, the Femoral Table joins Adept's already popular STARSsystem.

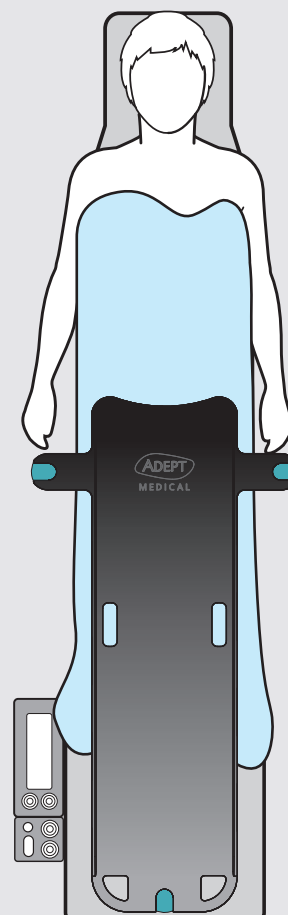
Designed in conjunction with a Neuroradiologist, the table is an effective solution for all femoral access procedures. It offers clinical benefits to the current practice of laying procedural equipment over the draped patient's legs.

The height adjustable radiolucent work surface facilitates stable catheter/guide wire manipulation and provides a surface for syringes, towels and other equipment.

Placed over the patient's legs once they are in a supine position on the angiography table, the height of the work surfaces' feathered leading edge can then be tuned to align with the arterial access site.

Made from carbon fibre, the table is radiolucent, light weight and strong.

A TABLE DESIGNED
SPECIALLY FOR
FEMORAL
PROCEDURES



KEY FEATURES

Clinician design

Fits most tables

Quick set up

Easy positioning

Radiolucent

Carbon fibre



MEDICAL
SPECIALTIES
AUSTRALIA

54 Gibbes St, Chatswood 2067 NSW, Australia
PO Box 764, Willoughby 2068 NSW, Australia

✉ custserv@msa.com.au ☎ 02 9417 7955
🌐 www.msa.com.au 📠 02 9417 5779